

# Pop Up Panda



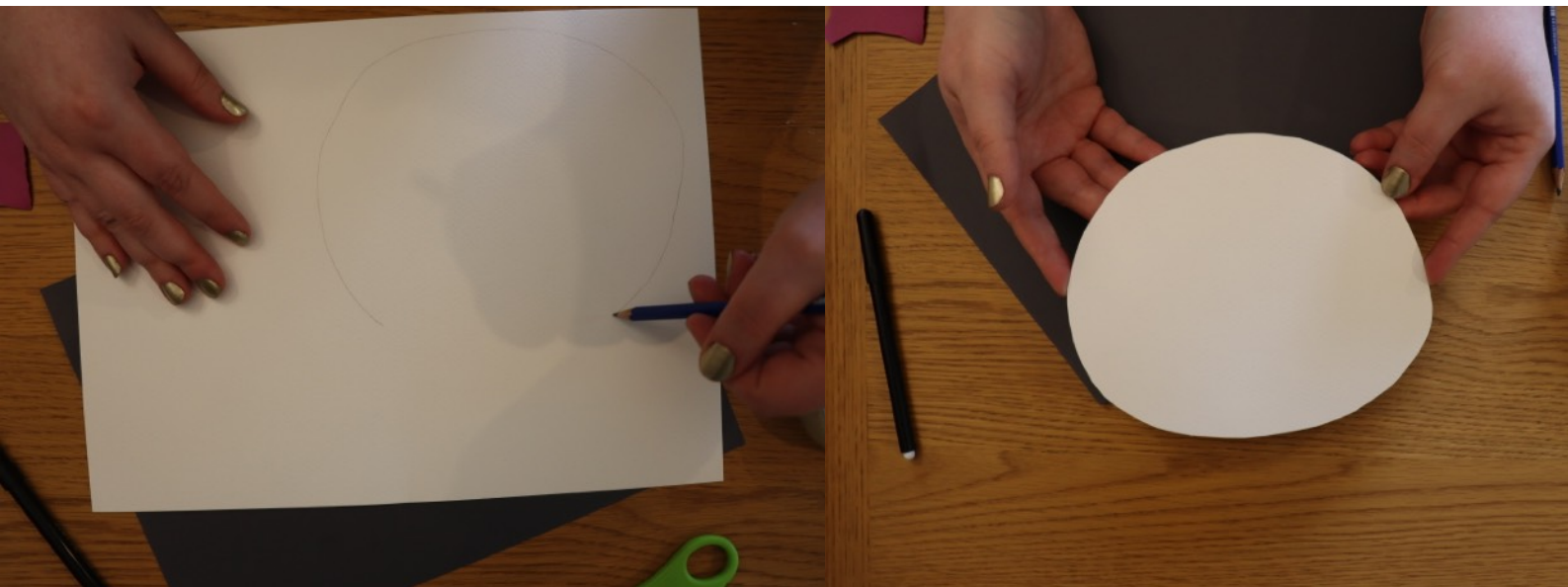
Celebrating “National Panda Day” on 16th March we thought it would be fun create a pop up panda!

## Tools and Materials:

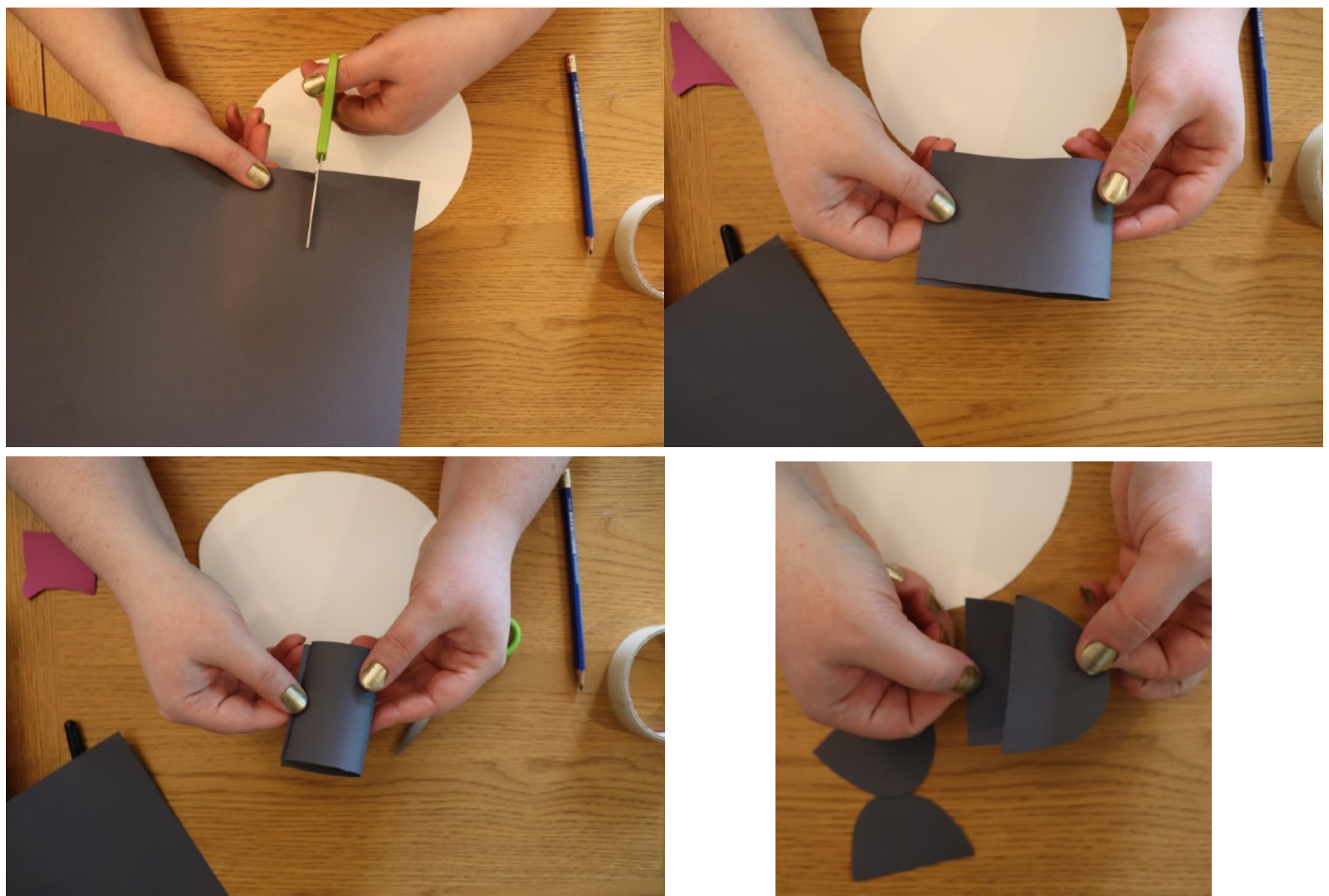
- Paper (Black, White, Pink)
- Pencil
- Black Felt Tip
- Scissors
- Sellotape



First of all with your white paper sketch out an oval for the panda face once you are happy with it then cut it out

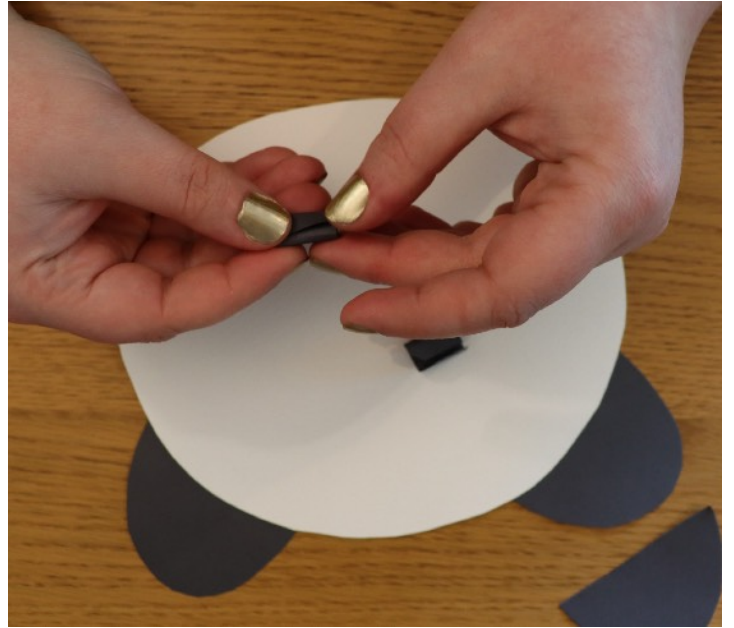
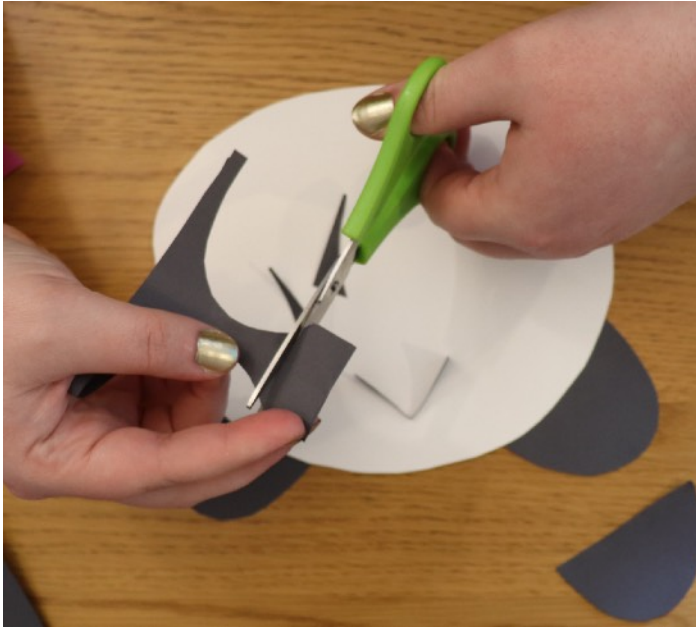


Now to create the ears, cut a strip off the black paper fold it in half then fold it in half again so you end up with 4 semi circles, attach 2 with sellotape behind the face

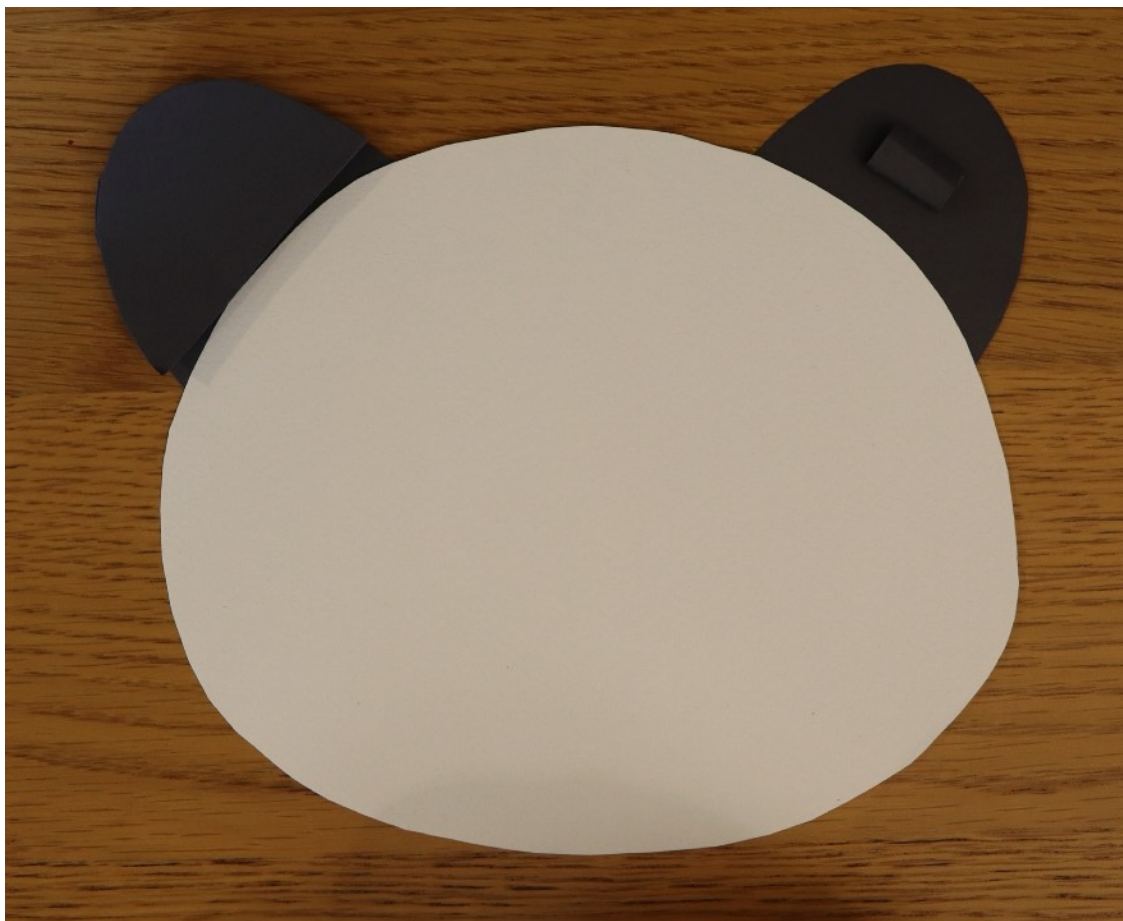




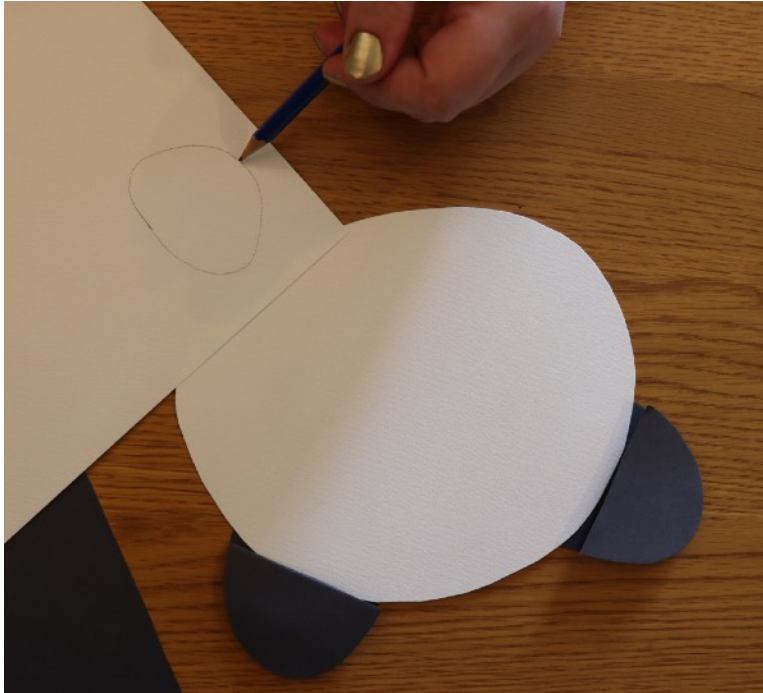
With the leftover paper cut some small rectangles that you can roll into tubes - this will help the panda ears pop



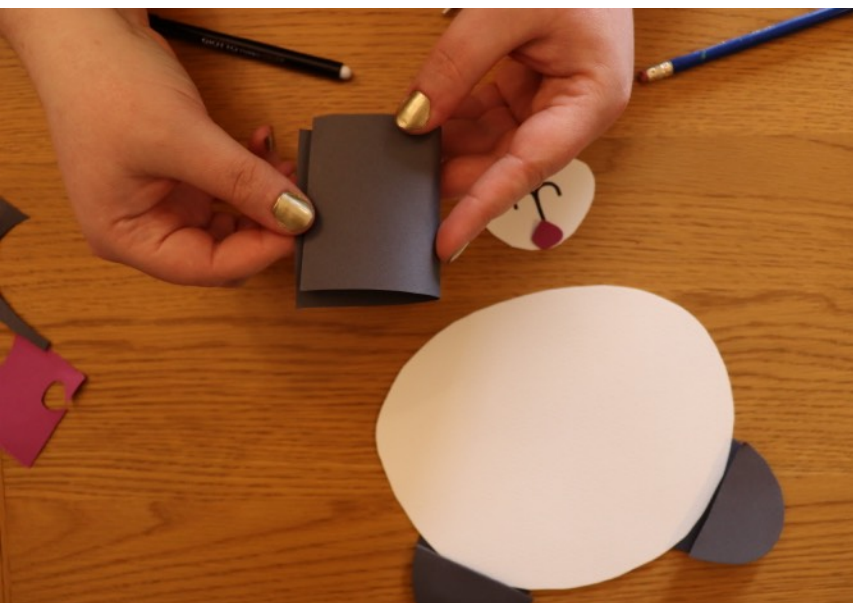
Use tape to stick the tube to ears, then using more tape attach the other set of ears on top, you can fold the tape in on itself to make a loop to stick it down



Now to add the nose and mouth to the panda, or snout as it is known. The shape we drew was a big almost widened U with a line across the top, you might want to create an oval - it is up to you! When you are happy with it add a pink nose - leaving space to draw the mouth and glue it on



Taking another bit of black paper folded over you can create 2 eyes to stick on the panda - again folding over sellotape to attach it to the face





So other details to add to the face - some white circles for highlights in the eyes and some pink ovals for cheeks if you want to add them - but you can personalise your panda however you would like to! We made small loops of sellotape to attach but if you find it easier you can always use glue if you have it



There you have it your very own “Pop Up Panda”!





Here is another we made to inspire you!

